



Where do University of Illinois Chemistry Graduate students live?

Revised January 2020



Resources for Off-Campus Community Living (OCCL)

The OCCL provides free services to students including:

- Help Finding Apartments and Houses
- Landlord Complaint Records
- Lease Reviews
- Tenant-Landlord Conflict Help
- Educational Programming (including workshops & presentations).

<https://occl.illinois.edu/>

<https://occl.illinois.edu/faq.asp>



Amber Pointe Apartments

<http://www.amber-pointe-apartments.com>

2018 E. Amber Lane, Urbana

1 & 2 bedrooms available

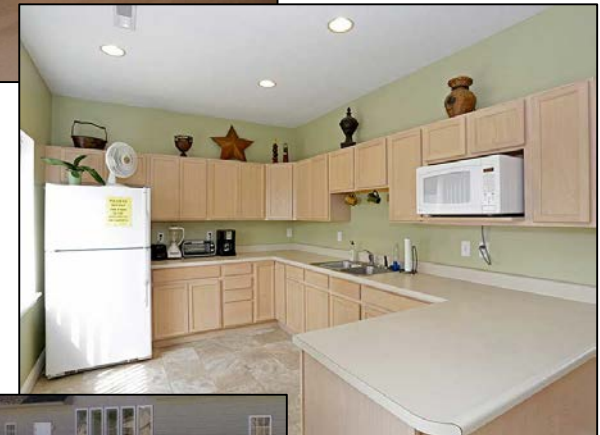
Distance from RAL: 3.5 miles

Pros:

- Secured entryway
- Very close to Urbana Meijer
- Directly on red and green bus route
- Prompt maintenance response
- Pool, hot tub, fitness center
- Washer/dryer in unit (fee waived 1st year if requested)
- Quiet, grad students & families live here
- Package receiving / drop off in building
- Cats allowed w/pet deposit

Cons:

- Unfurnished
- Longer bus ride to campus (20 minutes)
- Higher rent for being far from campus
- No utilities included



Continental Plaza Apartments

www.roysebrinkmeyer.com/champaign/continental-plaza/

801-911 S. Mattis Avenue, Champaign, IL

1-, 2-, and 3-bedroom apartments

Distance from RAL: ~3 miles

Pros:

- Flat rate for gas (heating isn't expensive in the winter)
- Cats allowed w/deposit
- The 4-Blue bus runs right past the apartment and takes you to campus
- They plow snow and take garbage for free
- Laundry in the building
- Central A/C
- Large pantry in kitchen



Cons

- Pretty long walk/bike ride to campus (about an hour to walk)
- One washer and dryer for six apartments (but it is not usually a problem)

Ginger Creek

Owned by Royse and Brinkmeyer

<http://www.gingercreekapts.com>

406 Ginger Bend Dr.
Champaign, IL 61822

Pros:

- Free uncovered parking, garage available for fee
- Very good AC/heater system
- Spacious kitchen with exhaust fan that vents outside
- Washer/dryer inside the unit
- Cats & birds welcome w/deposit
- Very quiet neighbors
- Responsive landlord and maintenance



Images from The Chestnut model



Cons:

- Expensive, roommate recommended
- Only some units remodeled
- 4 miles from CLSL, limited bus routes

Royse & Brinkmeyer Apartments

www.roysebrinkmeyer.com/

- Leasing company has 21 locations in Champaign of varying quality and price
- Distance from RAL: 1.6 miles

Pros (vary by location):

- Excellent location: right on a main bus line, close to campus by bike or foot, walking distance to downtown Champaign
- Free parking
- Overall, leasing company is responsible, responsive, and has a very good maintenance department

Cons (vary by location):

- No complaints, really. I could use a larger fridge



Images of State St. location, The Grange model

Roland Realty apartments

www.roland-realty.com/

Multiple locations on & off campus

Studios to 5 bedrooms & houses

Distance from RAL: varies

Pros:

- Older to luxury locations
- Some very close to campus
- Some locations pet friendly
- Furnished/unfurnished options
- Some utilities included (dependent upon location)
- Parking located on-site or nearby all locations
- Short term leases

Cons:

- Expensive, recommend roommates
- On-campus closer to RAL
- Most on-campus locations near loud parties



311 W. John



903 S. 1st



907 S. Second



9 E. University



1011 S. Locust

Images of some on-campus 1-bedroom & loft locations

Orchard Downs

www.housing.illinois.edu/living-options/apartments/orchard-downs

1841 Orchard Place, Urbana

1 & 2 bedrooms available

Distance from RAL: 1.5 miles

Pros:

- Close to campus
- Close bus stops to campus
- SUPER quiet almost to a fault
- Parking & internet included in rent
- Live-in staff
- Furnished & unfurnished options

Cons:

- No pets
- Have to walk to communal laundry rooms
- SUPER small kitchen
- No A/C for summer
- Not close to any restaurants
- Roommate recommended
- If roommate leaves, you are responsible for entire rent



Westgate Apartments

www.westgateapts.net/

1600 W. Bradley Ave, Champaign

1 & 2 bedrooms available

Distance from RAL: 3.8 miles

Pros:

- Friendly Staff
- On-site Laundry Mat
- 9 Brown Bus Stop is outside complex
- Pet friendly <25 lbs.
- Some utilities included
- Free off-street parking

Cons:

- Old building
- Poor Quality AC/Heating
- Heavy smoke smell in apartments
- 30-40 min bus ride to campus
- Poor sound proofing (noisy)



TOWER at THIRD

www.americancampus.com/student-apartments/il/champaign/tower-at-3rd

302 E. John St, Champaign; 2 & 3 bedrooms available; Distance from RAL: 0.5 miles

Pros:

- All utilities included
- 10 minute walk to lab
- Roommate matching
- \$734-809 per person (depending on floor, and other amenities)
- Individual liability leases
- Free laundry
- Two gyms, pool tables, & computer lab (free printing)
- Security guard to keep out creeps after 10pm
- Covered/Uncovered parking (additional cost)

Cons:

- Can be loud outside (get a fan, it covers the sound)
- Expensive, recommend roommate



Gentry Square Apartments

www.gentrysquareapartments.com/

1712 Gentry Square Ln, Champaign

1 & 2 bedrooms available

Distance from RAL: 4.6 miles

Pros:

- Beautiful area, quiet, and very safe!!
- Has a dog park, & dog run
- Allows dogs of ANY SIZE, and cats, up to 2 animals per apt
- You get a lot of storage/space
- Maintenance is very quick to respond
- Management is very friendly
- Pool & workout center!!
- Covered parking & lots of (free!) parking spaces for guests/friends/visitors

Cons:

- Expensive, recommend roommate
- Breed restrictions on dogs
- Quite far from campus, best to have a car
- Busses barely visit on weekends



University Group

<https://ugroupcu.com/>

Many locations

Studio to 7 bedroom or house

On & Off campus available

Distance from RAL: varies

Pros:

- Many buildings are new
- In-unit laundry (some locations)
- All close to bus stop
- Roommate Matching (some locations)
- Parking available first come, first serve

Cons:

- Utilities not included
- No pets
- Slow response from maintenance



808 S Lincoln, 4 bed



109 E Chalmers,
2 bed



207 S Wright, 1 bed



1006 W Stoughton, 2 bed

Delmont Village Condominiums

No website, purchase when available

1501-1509 Delmont Ct.

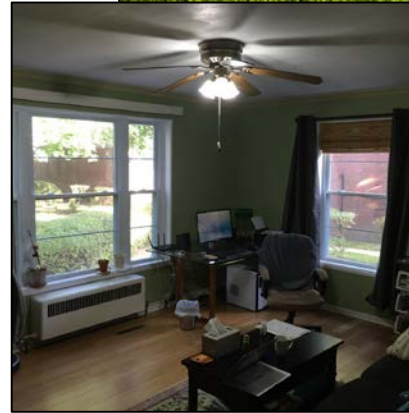
(corner of Pennsylvania & Race)

1 & 2 bedrooms

Distance from RAL: 1.5 miles

Pros:

- Close to campus (less than a mile)
- Many bus lines (safe ride comes here too)
- Mortgage is cheaper than rent
- 2-car garage
- Quiet neighborhood
- In Urbana's historic district
- Lots of beautiful landscaping and old trees
- Many professors live in this area
- Park (tennis courts, soccer, baseball diamond) right across the road
- Snow removal, maintenance, etc., all included



Cons:

- Purchase, not rent
- Condo fees are expensive (\$345) but include utilities, so may not be too bad after all
- You have to interview with the condo board before buying a condo here

Shared house on Springfield Avenue

www.rentchampaign.com/

612 Springfield, Champaign

6-Bedroom House

Distance from RAL: 2 miles

Pros:

- Very convenient for taking the bus (located right on the green bus line)
- Nice having a lot of space to host get-togethers
- Fairly close to downtown Champaign
- Nice living with other people from the program
- Washer/dryer provided
- Pet friendly w/deposit



Cons:

- Walking to school isn't really an option
- Good amount of street noise (ambulances/fire trucks)
- Long bus ride to main grocery stores & mall (40 minutes)

Fairlawn Village

<https://fairlawnre.com/fairlawn-village>

612 Springfield, Champaign

1 & 2 bedrooms, 3 bed loft available

Distance from RAL: 2 miles

Pros:

- Walking distance to Downtown Urbana
- Fiber internet for \$30/mo.
- Close to major MTD bus line, bus runs from 6:30am to 11:30pm
- Pet friendly
- Washer & Dryer in unit
- Free parking
- Garage available for fee

Cons:

- Expensive, recommend roommate
- Farther from many stores in Champaign
- Separate utility fee paid to Fairlawn



Barrington Apartments

<https://champaign-apartments.net/apartments/barrington.html>

2541 W Springfield, Champaign

1 bedrooms available

Distance from RAL: 4 miles

Pros:

- Washer/Dryer in unit
- Free Parking
- Small pets welcome with fee
- Sewage & trash included
- Fiber Internet for fee

Cons:

- No central air or heat, small unit in living room
- Internet is not Wi-Fi, therefore must purchase a router
- Very far from campus (50-60 minute bus ride, 15-20 car ride)



Goodwin-Green UIUC Graduate Apartments

www.housing.illinois.edu/living-options/apartments/goodwin-green

S. Goodwin Ave., Urbana, IL

Sleeping room, Efficiency, & 1 bedrooms

Distance from RAL: 0.2 miles

Pros:

- On Campus
- Fixed heating cost in winter
- Good internet
- Prompt maintenance
- Utilities, internet, & cable included
- Lounge
- Friday Night Social Hour
- Laundry on-site
- On-site parking for a fee

Cons:

- Rent is high
- Kitchen is small
- A/C is inefficient / window unit
- Outdated building – however, remodeling is being done



Green Street Realty

www.greenstreetrealty.com/off-campus/apartments

Many locations on & off campus

Example: 904 N. Broadway, Urbana
(University Park Apartments)

Distance from RAL: 1.7 miles

Pros:

- Next to Crystal Lake Park
- Central AC and Heat
- Small Pets allowed
- Spacious apartments
- Responsive Maintenance
- Washer/Dryer in the building

Cons:

- Heat is through electricity
(Winter costs can get high)
- On the Gold 10 Bus Route from
6:30am-7:00 pm



ONE North/South

one-illinois.com/

1601 N. Lincoln Ave. Urbana

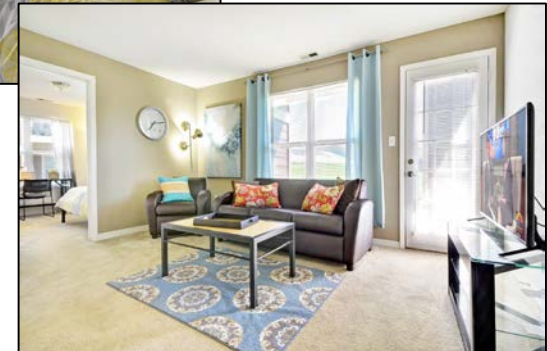
Distance from RAL: ~1.8 miles

Pros:

- Individual leases & roommate matching
- Many units, so a lot of people around
- Good neighborhood
- Pet-friendly w/fee & breed restrictions
- Furnished
- MTD - 22Illini every 10/30 min.
(weekday/weekend)
- In unit laundry
- Internet & satellite TV included
- Pool & fitness center

Cons:

- ~15 min bus ride to/from lab
- Gates always open
- Loud, poor sound proofing



Town and Country apartments

www.tandcapartments.com

1032 E. Kerr Avenue, Urbana
1 & 2 bedroom units available
Distance from RAL: 4.9 miles

Pros:

- Many units, so lots of people around = fairly safe
- Pets allowed (breed restrictions) & has dog park
- Free high speed internet
- There are four pools, fitness center, playground & free parking
- Laundry either in unit or building depending on unit
- Has air conditioning

Cons:

- 16 min bus ride to/from lab (every 30 min.)
- Bus only runs until 6pm



Photos from the
Prestwicke unit

Urbana Rentals

<https://www.urbanarental.com/612-w-california-unit-1-urbana-il>

Multiple locations on & off campus

2 bedrooms available

Distance from RAL: varies

Several grads previously rented from Weiner Companies. It has since changed landlords.

Pros:

- Shared washer/dryer
- Water & heat included
- Parking for fee
- Quiet, safe area
- Pet friendly
- Smoke free

Cons:

- Landlord not local
- Window A/C



Renting a house

Variety of landlords

Off-campus generally

Example provided: 1406 Maple St, Urbana

3 bedrooms available

Distance to RAL: 1.8 miles

Pros:

- Safe, Quiet, Clean and Spacious
- Back yard
- Bus line from 6am-7pm line (most near bus line, but may need car)
- Cheap when splitting with roommates
- Laundry or laundry hook-ups
- Free parking (street, driveway or garage)

Cons:

- Need to mowing & shovel snow
- No utilities included
- Usually older
- Not furnished



Where will you call home?



University of Illinois at
Urbana Champaign