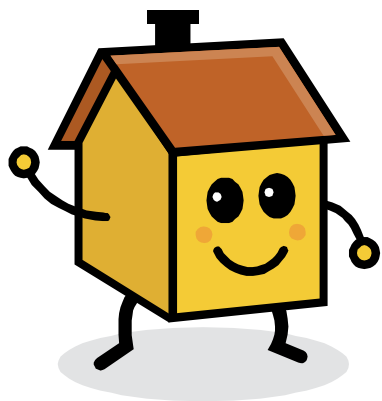


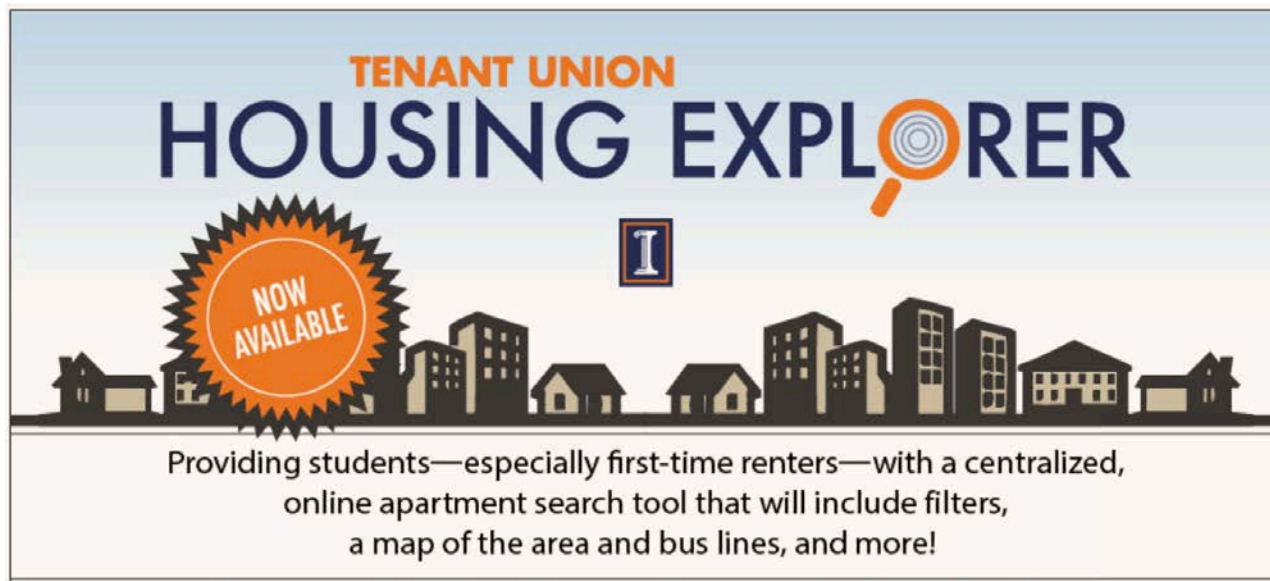
Where do University of Illinois  
Chemistry Graduate students live?

2019



# Resources at the Tenant Union

- The UIUC Tenant Union provides free services to students including:
  - Help Finding Apartments and Houses
  - Landlord Complaint Records
  - Lease Reviews
  - Tenant-Landlord Conflict Help
  - Educational Programming (including workshops & presentations).
- <http://www.tenantunion.illinois.edu>
- <http://www.tenantunion.illinois.edu/faq.html>



# Amber Pointe Apartments

<http://www.amber-pointe-apartments.com>

## Pros:

- Secured entryway
- Newer construction/modern
- Very close to Meijer
- Directly on red and green bus route
- Prompt maintenance response
- Pool, tanning bed, fitness center
- Washer/dryer in unit (fee usually waived if requested on lease agreement)
- Very quiet, graduate students and families live here
- Amazon somehow gets into the building to deliver Prime packages 😊

## Cons:

- Unfurnished
- Longer bus ride to campus (20 minutes)
- Higher rent for being far from campus



# Town and Country apartments

[www.tandcapartments.com](http://www.tandcapartments.com)

- E. Kerr Avenue, Urbana
- Distance from RAL: 2.4 miles



## Pros:

- Many units, so lots of people around = fairly safe.
- They allow pets and even have a dog park.
- There are four pools and a fitness center.

## Cons:

- ~3 miles from campus, so a 20 min bus ride to/from lab
- Bus only runs until 6pm

# Continental Plaza Apartments

801-911 S. Mattis Avenue, Champaign, IL

<http://www.roysebrinkmeyer.com/champaign/continental-plaza/>

1-, 2-, and 3-bedroom apartments available in the complex

About 3 miles to RAL

## Pros

- Flat rate for gas (heating isn't expensive in the winter)
- Cats allowed
- The 4-Blue bus runs right past the apartment and takes you to campus
- They plow snow and take garbage for free
- Laundry in the building
- Central AC
- WE HAVE A GIANT PANTRY!



## Cons

- Pretty long walk/bike ride to campus (about an hour to walk)
- One washer and dryer for six apartments (but it is not usually a problem)

We are first years  
in a 2-bedroom  
apartment



# Ginger Creek

Owned by Royse and Brinkmeyer

<http://www.gingercreekapts.com>

## Pros:

- Free uncovered parking
- Very good AC/heater system.
- Spacious kitchen with exhaust fan that vents outside.
- Washer dryer inside the unit.
- Multiple pets welcome with 1 time deposit.
- Very quiet neighbors.
- Responsive landlord and maintenance.



## Cons:

- 4 miles from CLSL, limited bus routes.
- Pricey, ~750/month

# Roland Realty apartment

<http://www.roland-realty.com/>

- W Green Street, Urbana
- Distance from RAL: 0.6 miles



## Pros:

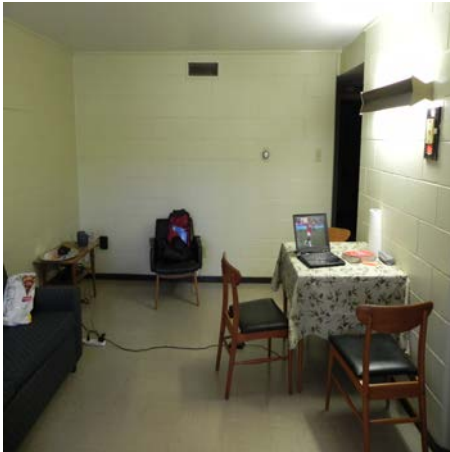
- fairly cheap
- very close to campus
- reasonably spacious

## Cons:

- lots of wild undergraduate parties
- paltry laundry facilities
- leaking roof
- ambitious raccoons

# Orchard Downs

<http://www.housing.illinois.edu/living-options/apartments/orchard-downs>



## Cons

- No pets
- Have to walk to communal laundry rooms
- SUPER small kitchen
- No A/C for summer
- Not close to any restaurants
- Rent is costly without roommate and if your roommate moves out, you are stuck with the entire rent (Rent is to University Housing, not to the apartment)

## Pros

- Very close to campus
- Great Bus transportation to campus
- SUPER quiet almost to a fault
- Parking and internet included in rent



# Westgate Apartments

<http://www.westgateapts.net/>

- Bradley Ave, Champaign
- Distance from RAL: 3.8 miles



## Pros:

- Friendly Staff
- On-site Laundry Mat
- 9 Brown Bus Stop is outside complex

## Cons:

- Old building
- Poor Quality AC/Heating



## TOWER at THIRD

- All utilities included
- 10 minute walk to lab
- FREE laundry
- Two FREE gyms
- Security guard to keep out creeps after 10pm
- FREE tanning (weird, I know)
- Covered/Uncovered parking (additional cost)

- Approximately ~ \$680-790 (depending on floor, and other amenities)
- Pool tables & Computer lab (Free Printing)

### Cons:

- Can be loud outside (get a fan, it covers the sound)
- You have to have a roommate

<https://www.americanampus.com/student-apartments/il/champaign/tower-at-3rd>

# Royse & Brinkmeyer Apartments

<http://www.roysebrinkmeyer.com/>

- Leasing company has 21 locations in Champaign of varying quality and price
- Near State and Springfield St., Champaign
- Distance from RAL: 1.6 miles



## Pros (vary by location):

- Excellent location: right on a main bus line, close to campus by bike or foot, walking distance to downtown Champaign.
- Overall, leasing company is responsible, responsive, and has a very good maintenance department.

## Cons (vary by location):

- No complaints, really. I could use a larger fridge



# Gentry Square Apartments

<http://www.gentrysquareapartments.com/>



## Pros:

- Beautiful area, quiet, and very safe!!
- Has a dog park, & dog run
- Allows dogs of ANY SIZE, and cats, up to 2 animals per apt
- You get a lot of storage/space
- Maintenance is very quick to respond
- Management is very friendly
- A pool!!
- A newly renovated workout center
- Covered parking & lots of (free!) parking spaces for guests/friends/visitors to park

## Cons:

- Rent is quite high, best to have a roommate
- Breed restrictions on dogs
- Quite far from campus, best to have a car
- Busses barely visit on weekends

# University Group

figure from [http://www.ugroupcu.com/property/506\\_E\\_\\_Stoughton\\_\\_Champaign.html](http://www.ugroupcu.com/property/506_E__Stoughton__Champaign.html)

Next to Beckman Institute, in Champaign  
(Stoughton, White, Clark)

## Pros:

- Studio, 1-bedroom available
- No pet
- About \$510/month (water, trash management, parking spot (\$80/month) included)

## Buslines

- Teal, Red take you to CLSL
- Yellow, Brown take you to the bookstore

## Tips:

- Think twice before deciding to live in the basement (It's cheaper, but it comes with its problems)



## Cons:

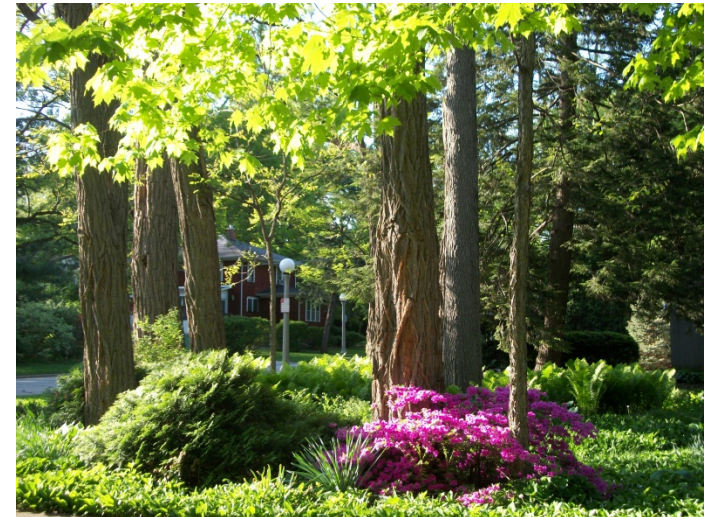
- Power/gas, internet NOT included
- Old
- Slow response from maintenance

• Distance from RAL: ~0.9 miles



# Delmont Condos

Corner of  
Pennsylvania and  
Race



## Pros:

- Close to campus (less than a mile)
- Many bus lines (safe ride comes here too)
- Mortgage is cheaper than rent
- 2-car garage
- Quiet neighborhood
- In Urbana's historic district
- Lots of beautiful landscaping and old trees
- Many professors live in this area
- Park (tennis courts, soccer, baseball diamond) right across the road
- Snow removal, maintenance, etc., all included

## Cons:

- Condo fees are expensive (\$300) but include utilities, so may not be too bad after all.
- You have to interview with the condo board before buying a condo here

# Big House on Springfield Avenue



- 5-Person House off of Springfield Ave.
- Rented through RentChampaign  
<http://www.rentchampaign.com/>

## Pros:

- Very convenient for taking the bus (located right on the green bus line)
- Nice having a lot of space to host get-togethers
- Fairly close to downtown Champaign
- Nice living with other people from the program

## Cons:

- Walking to school isn't really an option
- Good amount of street noise (ambulances/fire trucks)
- Would have been nice to know the layout of the town better (where downtown is, where the shopping complex on Prospect is, etc...)



# Renting a house

- Locations vary: Example: Maple Street
- 10 minutes to campus via bus or bike
- Free parking on street and driveway + garage



## Pros:

- Safe, Quiet, Clean and Spacious
- Nice back yard
- Busline from 6am-7pm
- Cheap when splitting with roommates
- Laundry in the house

## Cons:

- 15 min walk home after 7pm if using bus.
- Responsible for mowing and snow shoveling/not to bad when its shared responsibility
- No utilities included

# Fairlawn Village



## Pros:

- 2 miles from campus, 1 mile from DT Urbana
- Fiber internet for \$30/mo
- Close a major MTD bus line (MTD), bus runs from 6:30a to 11:30 PM
- pet friendly
- one bedrooms to three bedroom lofts to please anyone's interests
- Washer & Dryer in unit
- Free parking
- Garage available

## Cons:

- Rent is a bit high without a roommate
- Farther from many stores in Champaign

# Barrington Apartments

W Springfield, Champaign



## Pro's:

- Washer/Dryer in unit
- Free Parking
- Can have a pet for a little extra money
- Sewage, trash removal and internet are provided

## Con's:

- No central air or heat, small unit in living room
- Internet is not Wi-Fi, therefore must purchase a router



# Goodwin-Green UIUC Graduate Apartments

- Campus
- Distance from campus: 0 miles

<http://www.housing.illinois.edu/living-options/apartments/goodwin-green>



## Pros:

- On Campus
- Fixed heating cost in winter
- Good internet
- Prompt maintenance
- Basic Cable included
- Lounge
- Friday Night Social Hour

## Cons:

- Rent is high
- Kitchen is small
- AC is inefficient / window unit
- Outdated building

# Green Street Realty – 904 N. Broadway



- Distance from campus: 1.7 miles

<http://www.greenstreetrealty.com/off-campus/apartments>

## Pros:

- Next to Crystal Lake Park
- Central AC and Heat
- Small Pets allowed
- Spacious apartments
- Responsive Maintenance
- Washer/Dryer in the building



## Cons:

- Heat is through electricity (Winter costs can get high)
- On the Gold 10 Bus Route. Starts at 6:30 am and ends at 7:00 pm.

# ONE North

<http://one-illinois.com/>

- 1601 N. Lincoln Ave. Urbana
- Distance from RAL: ~1.8 miles

*figure from <http://one-illinois.com/>*

## Pros:

- Many units, so a lot of people around
- no pets
- new furniture
- 22Illini every 10/30 min (weekday/wkd)
- good neighborhood



## Cons:

- ~15 min bus ride to/from lab



# Weiner companies

<http://www.weinercompanies.com/index.php/properties/603-w-nevada-1/>

211 E Green St.  
Urbana  
217-384-8001

Several grads live on Nevada and rent from Weiner companies. They have some really nice, spacious one-bedroom apartments that are sections of large remodeled houses





Cheap single bedroom apartments.  
By Crystal Lake and the hospital.  
Close to bus routes.

407 W Park St. Urbana  
217-344-2017



# Where will you call home?



University of Illinois at  
Urbana Champaign

